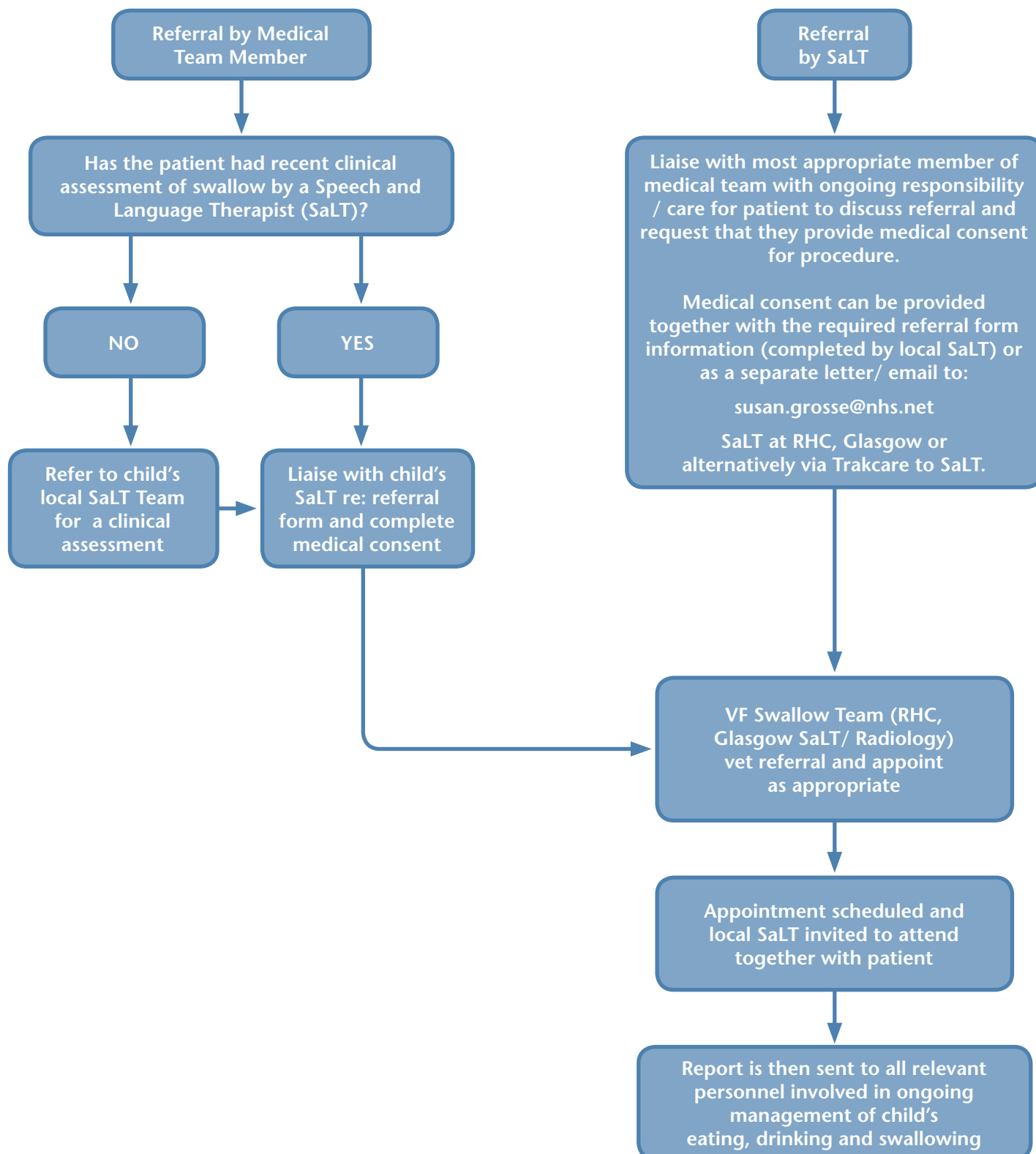


Referral Pathway for Videofluoroscopy (VF) Swallow Assessment at RHC, Glasgow



FAQs

- *I am a Speech and Language Therapist (SaLT), why do I need medical consent when I am the professional assessing the patient's swallow?*

Answer: Medical consent is required for two reasons:

1. Legal – we are obliged by law to have an authorised referral for a (relatively high dose) examination requiring radiation. This is almost always a medical practitioner.
2. Clinical – the outcome of the assessment may require clinical intervention (including medical/surgical) that is best done as part of a multidisciplinary team and may include onward referral.

- *I am a Consultant Paediatrician / Surgeon, why do I require a SaLT assessment prior to referring for Videofluoroscopy (VF)?*

Answer:

1. This is standard good practice as outlined in following position paper:
www.rcslt.org/members/publications/publications2/videofluoroscopic_position_paper2013
2. The outcome of the assessment will require ongoing management by a SaLT.

- *Why has the process of referral changed since the procedure moved from the Dental Hospital to RHC, Glasgow?*

Answer:

There has been NO change in referral protocol since VF has been transferred to RHC, Glasgow. We have been obliged to change our referral form as part of the legal requirement to be a largely SaLT led service.

Authors: Susan Grosse, Speech and Language Therapist, NHS Greater Glasgow & Clyde, Ruth Allen, Consultant Paediatric Radiologist, NHS Greater Glasgow & Clyde
Produced in conjunction with the West of Scotland Paediatric Complex Respiratory Managed Clinical Network